

In the SAWYER Project, we analysed how the double digital and green transition (Twin Transition) is going to change the jobs of the furniture manufacturing sector in 2030.

[CIRCULARFURNITURE-SAWYER.EU](https://circularfurniture-sawyer.eu)

Aims

The **Twin Transition** (green & digital) will have a huge impact on the EU furniture sector during next years and decades.

In the SAWYER Project, we analysed how the **Twin Transition is going to change the jobs of the furniture manufacturing sector** in the future.

SAWYER built up its analysis on the outcomes of the DIGIT-FUR Project, which analysed the impact of the **digital transformation** on the furniture industry and in the sector key occupational profiles.

We integrated DIGIT-FUR results with the expected impacts of the sector **transition toward a more circular economy**. The final result is a detailed analysis of the foreseen changes in **eleven key occupational profiles** of the sector due to the Twin Transition in 2030.

Occupational profiles analysed

- Sales and marketing manager
- Industrial production manager
- Supply chain manager
- Maintenance & repair engineer
- Furniture designers
- Cabinet-makers and related workers
- Woodworking-machine tool setters and operators
- Upholsterers and related workers
- Wood processing plant operators
- Furniture assembler
- Factory hand

This project has been funded by the European Commission call: Support for Social Dialogue VP/2018/001. Grant Agreement Reference: VS/2019/0027.



CENFIM
Furnishings Cluster

European Federation
of Building
and Woodworkers



E F I C
European Furniture Industries Confederation

FLA
FEDERLEGNOARREDO

UEA

With the financial support of the European Union. The European Commission support for the production of this publication does not constitute an endorsement of the contents, which reflects the views only of the authors, and the Commission cannot be held responsible for any use, which may be made of the information contained therein.

© CENFIM 2021 / Reproduction is authorised provided the source is acknowledged.

Impacts of the twin transition on the EU furniture industry

Forecast of the sector by 2030 due to its circular economy transition and digital transformation

[CIRCULARFURNITURE-SAWYER.EU](https://circularfurniture-sawyer.eu)



Final report

1 Project final report, with all the results, is available in 10 languages. It can be downloaded, along with other technical reports, in <https://circularfurniture-sawyer.eu/downloads/>

Results

- 2 Identification of the main legislative and voluntary instruments that will directly impact the circular transition of the sector.
- 3 Forecast how the sector will be in 2030 due to its circular transition.
- 4 Analysis on how the Twin Transition will change the tasks currently performed by the eleven most characteristic occupational profiles in the sector.
- 5 Forecast of which changes will occur in these occupational profiles from an occupational health and safety perspective. We identified which risks will remain unchanged and which will emerge, increase, decrease or disappear.
- 6 New knowledge, skills and competences that these professional profiles will need in that future scenario.
- 7 The main initiatives that are being deployed across Europe to promote this transition toward a more circular economy.
- 8 Conclusions and recommendations for our legislators, companies, VET regulators and providers.

Cabinet-maker and related workers ISCO 7522

2020 Occupational profile

2025/30 Occupational profile

Tasks changes

Task	2020	2025/30
Operating conventional machines such as power tools, hand tools, sanders, sanders and other machines	High	High
Assembling, repairing, maintaining and painting furniture	High	High
Working with wood, metal, plastic, glass and other materials	High	High
Using hand tools, power tools, sanders, sanders and other machines	High	High
Assembling, repairing, maintaining and painting furniture	High	High
Working with wood, metal, plastic, glass and other materials	High	High
Using hand tools, power tools, sanders, sanders and other machines	High	High
Assembling, repairing, maintaining and painting furniture	High	High
Working with wood, metal, plastic, glass and other materials	High	High
Using hand tools, power tools, sanders, sanders and other machines	High	High
Assembling, repairing, maintaining and painting furniture	High	High
Working with wood, metal, plastic, glass and other materials	High	High

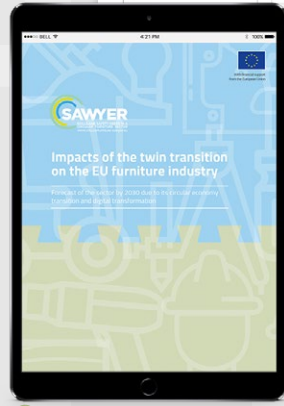


Table 2: List of legislative and voluntary instruments that will directly impact the circular transition of the sector.

Instrument	Impact
EU Taxonomy Regulation	Defines the taxonomy for sustainable activities, including the circular economy.
EU Climate Law	Establishes the EU climate target of net zero by 2050.
EU Industrial Emissions Directive	Regulates the industrial sector, including the furniture industry.
EU Energy Efficiency Directive	Regulates energy efficiency in buildings and other buildings.
EU Energy Performance of Buildings Directive	Regulates energy performance of buildings.
EU Energy Labelling Directive	Regulates energy labelling of energy-consuming products.
EU Ecodesign Directive	Regulates the energy efficiency of energy-consuming products.
EU Ecodesign for Energy-Related Products Directive	Regulates the energy efficiency of energy-related products.
EU Ecodesign for Energy-Related Products Directive	Regulates the energy efficiency of energy-related products.

Cabinet-maker and related workers ISCO 7522

2020 Occupational profile

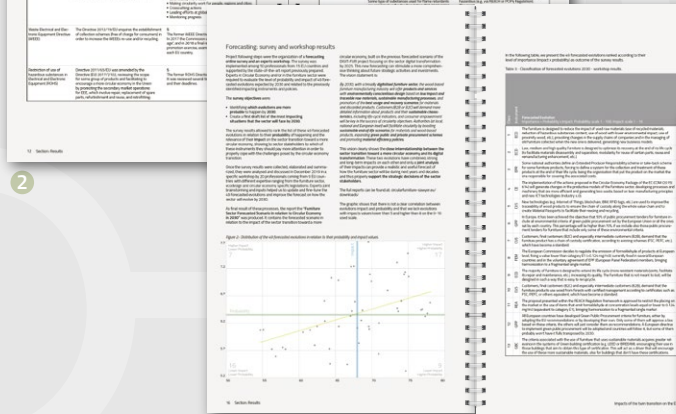
2025/30 Occupational profile

Hazards and risks changes

Hazard	2020	2025/30
Physical	High	High
Chemical	Low	Low
Biological	Low	Low
Psychological	Low	Low
Social	Low	Low

Conclusions

Key findings and recommendations for stakeholders.



Hazards and risks changes

Hazard	2020	2025/30
Physical	High	High
Chemical	Low	Low
Biological	Low	Low
Psychological	Low	Low
Social	Low	Low

Skills and competences needs

Skill	2020	2025/30
Technical	High	High
Digital	Low	High
Soft	Low	Low
Green	Low	High

